

# LINEAR Relationships

A \_\_\_\_\_ between 2 \_\_\_\_\_

that has a **CONSTANT RATE OF CHANGE:**

Defining features:

The \_\_\_\_\_ variable increases/decreases by the \_\_\_\_\_ every time the \_\_\_\_\_ variable increases by \_\_\_\_\_.

**Examples:**

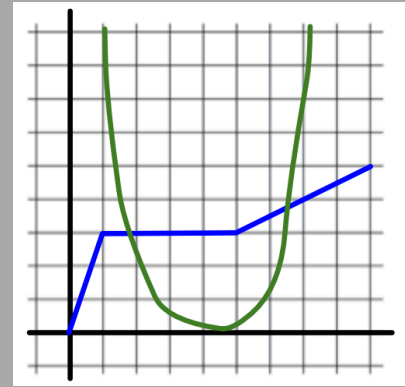
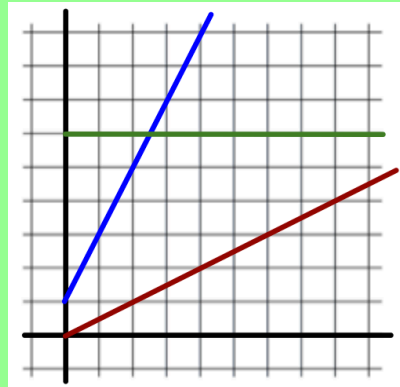
**Non-examples:**

Tables

x	y
0	3
1	6
2	9
3	12

x	y
0	5
1	6
2	9
3	15

Graphs



Equations

$$y = \boxed{\phantom{000}} x + \boxed{\phantom{000}}$$

**\*\*\*PROPORTIONAL Relationships\*\*\***

Special type of linear relationship that always starts at \_\_\_\_\_.

