

How to calculate

Example: 10 pizzas cost \$120

$$\frac{\$120}{10 \text{ pizzas}} = \$12 \text{ per pizza} \quad \frac{10 \text{ pizzas}}{\$120} = .083 \text{ pizzas per } \$1$$

Remember:

- divide top by bottom
- label work and answer (read top to bottom)
- 1 unit rates for every situation

Equation:

$$y = \frac{12}{1} \cdot x$$

Unit rate
constant of proportionality
(COP)

Unit Rate

Definition: a rate (or ratio) where one of the quantities is 1.

ex. miles per hour

Graph:

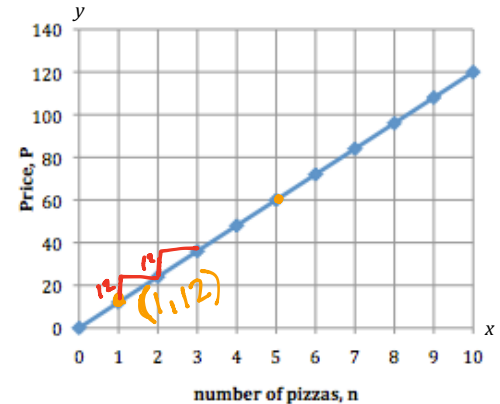


Table:

| | | | | | | |
|------------------|-----|------|------|------|------|-------|
| Number of pizzas | 0 | 1 | 2 | 3 | 4 | 10 |
| Price | \$0 | \$12 | \$24 | \$36 | \$48 | \$120 |

Unit Rate

$\frac{P}{n} = \$12 \text{ per pizza}$